

READY FOR GREAT MISSIONS?
CHOOSE TALAN!
TACTICAL FOOTWEAR


TALAN
SINCE **1923** FOOTWEAR FOR
GREAT MISSIONS

SOLES
BY



 **BASF**

CORDURA
Advanced Fabrics



CONTENTS

ARTICLES

PAGES

4435

04

4351

05

4330

06

4347

07

4321

08

4327

09

4457, 4356

10

7436, 7404

11

4338, 7306

12

7408, 4354

13

7405, 7342

14

4300, 4300 VIBRAM

15

4333, 4329

16

PROTECHFIT, URBANTACTIC

17

MID BOOTS 4435

EN ISO 20347:2022

42 size Height: 130 ± 5mm | 42 size Half-pair weight: 630g ± 3% | Sizes: 35 - 52



GREEN

BROWN

BLACK

- Upper material:
 - breathable suede leather;
 - polyurethane net that provides extra protection;
 - protective TPU cover for toe/back;
 - 100% nylon 6.6 Cordura – durable material with water-repellent properties;
 - Lining: light and breathable material Mesh.
 - Membrane ePTFE: waterproof material which provides protection against water penetration in dynamic conditions for more than 48 hours. Also has vapor-permeable and abrasion resistant properties.
 - All upper parts are stitched with waterproof threads.
 - Lacing:
 - durable and waterproof laces;
 - anti-corrosion loops;
 - strong polyamide textile loops;
 - Outsole: PU-Rubber self-cleaning, high temperatures/oil resistant, provides stability on difficult turns and directions (SR)(HRO).
 - Main insole: made of strobil material.
 - Removable insole: three-layer comfortable anatomically shaped insole which absorbs moisture and remains dry in difficult conditions, antibacterial properties.
- Boots made as per Gore-Tex technology.



DESERT

**THIS MODEL IS USED BY THE ARMED FORCES OF UKRAINE
AND OTHER UKRAINIAN DEFENSE FORCES IN THE RUSSIAN-UKRAINIAN WAR**



HIGH BOOTS 4351

EN ISO 20347:2022

42 size
Height: 165 ± 5mm | **Half-pair weight:** 740g ± 3% | **Sizes:** 35 - 52



GREEN

BROWN

BLACK

- Upper material:
 - Waterproof nubuck 2.0-2.2 mm;
 - 100% nylon 6.6 Cordura – durable material with water-repellent properties;
 - protective TPU cover for toe/back
 - Lining: light and breathable material Mesh.
 - Membrane ePTFE: waterproof material which provides protection against water penetration in dynamic conditions for more than 48 hours. Also has vapor-permeable and abrasion-resistant properties. The membrane is made with an additional layer of insulation for wearing in the cold season.
 - All upper parts are stitched with waterproof threads.
 - Lacing:
 - durable and waterproof laces;
 - anti-corrosion loops;
 - strong polyamide textile loops;
 - Outsole: PU-Rubber self-cleaning, high and low temperatures/oil resistant, provides stability on difficult turns and directions (SR)(HRO).
 - Main insole: made of kevlar material which has anti-puncture properties
- The main insole is insulated with Neoprene-type material has shock-absorbing properties and retaining heat at low temperatures.
- Removable insole: three-layer comfortable anatomically shaped insole with an additional layer of foil material for keep warm.
- Boots made as per Gore-Tex technology.



OLIVE

**THIS MODEL IS USED BY THE ARMED FORCES OF UKRAINE
 AND OTHER UKRAINIAN DEFENSE FORCES IN THE RUSSIAN-UKRAINIAN WAR**



HIGH BOOTS 4330

EN ISO 20347:2022

42 size
Height: 180 ± 5mm | 42 size
Half-pair weight: 700g ± 3% | Sizes: 35 - 52



COYOTE

OLIVE

BLACK

- Upper material:
 - waterproof nubuck 2.0-2.2 mm;
 - 100% nylon 6.6 Cordura - durable material with water-repellent properties;
 - Additional protective TPU padding on the toe;
 - Lining: light and breathable material Mesh.
 - Membrane ePTFE: waterproof material which provides protection against water penetration in dynamic conditions for more than 48 hours. Also has vapor-permeable and abrasion resistant properties.
 - All upper parts are stitched with waterproof threads.
 - Lacing:
 - durable and waterproof laces;
 - anti-corrosion loops;
 - strong polyamide textile loop at the back;
 - Outsole: PU-Rubber self-cleaning, high temperatures/oil resistant, provides stability on difficult turns and directions (SR)(HRO).
 - Main insole: made of strobil material;
 - Removable insole: three-layer comfortable anatomically shaped insole which absorbs moisture and remains dry in difficult conditions, antibacterial properties.
- Boots made as per Gore-Tex technology.



BROWN

THIS MODEL IS USED BY THE ARMED FORCES OF UKRAINE

AND OTHER UKRAINIAN DEFENSE FORCES IN THE RUSSIAN-UKRAINIAN WAR



HIGH BOOTS 4347

EN ISO 20347:2022

42 size
Height: 205 ± 5mm | 42 size
Half-pair weight: 780g ± 3% | **Sizes:** 35 - 52



COYOTE

GREEN

BLACK

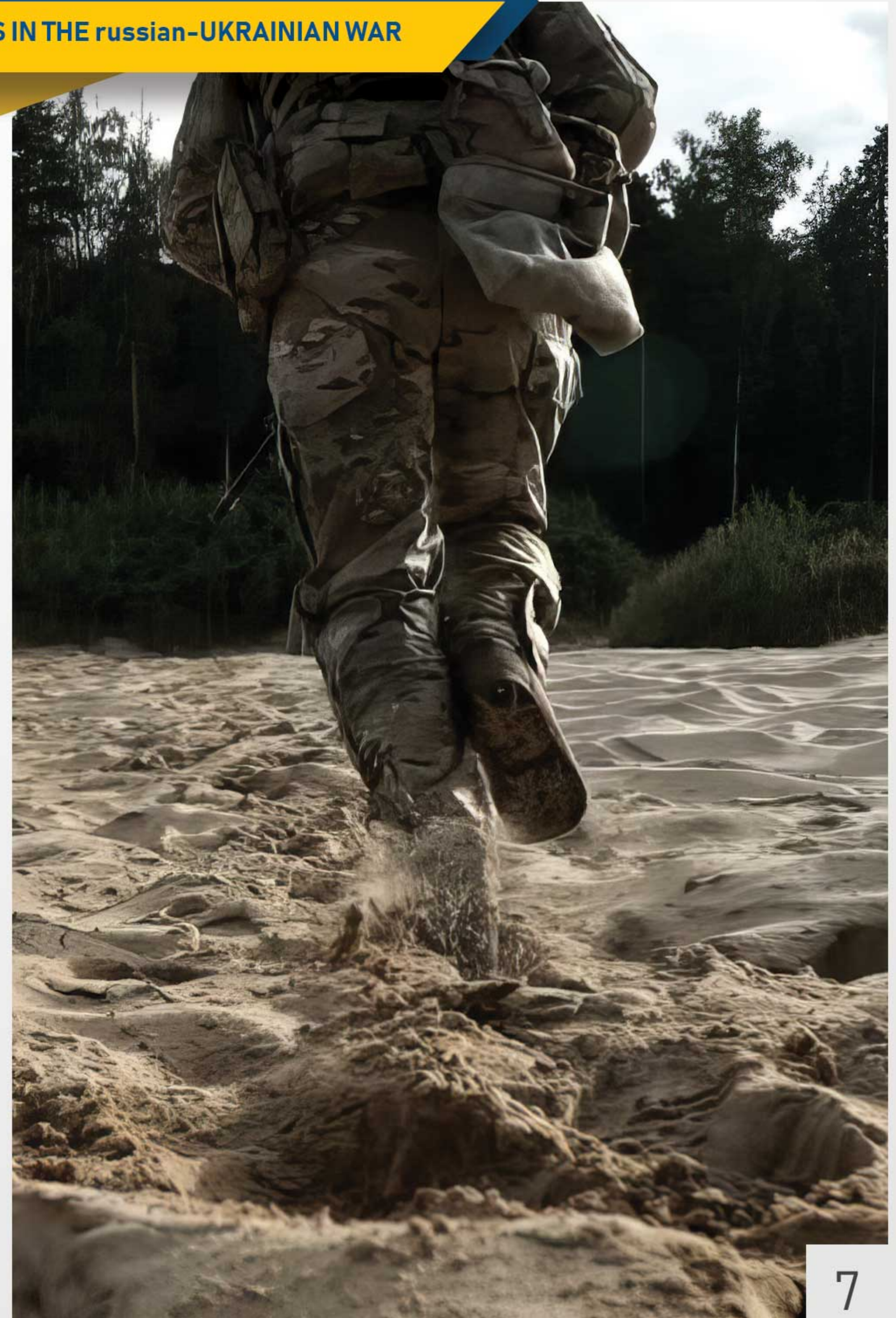
- Upper material:
 - smooth waterproof chrome leather 2.0-2.2 mm;
 - 100% nylon 6.6 Cordura – durable material with water-repellent properties;
 - protective TPU cover for toe;
 - Lining: light and breathable material Mesh.
 - Membrane ePTFE: waterproof material which provides protection against water penetration in dynamic conditions for more than 48 hours. Also has vapor-permeable and abrasion resistant properties.
 - All upper parts are stitched with waterproof threads.
 - Lacing:
 - durable and waterproof laces;
 - anti-corrosion loops;
 - strong polyamide textile loop at the back;
 - Outsole: PU-Rubber self-cleaning, high and average low temperature temperatures/oil resistant, provides stability on difficult turns and directions (SR)(HRO).
 - Main insole: made of strobel material.
 - Removable insole: three-layer comfortable anatomically shaped insole which absorbs moisture and remains dry in difficult conditions, antibacterial properties.
- Boots made as per Gore-Tex technology.



BROWN

THIS MODEL IS USED BY THE ARMED FORCES OF UKRAINE

AND OTHER UKRAINIAN DEFENSE FORCES IN THE RUSSIAN-UKRAINIAN WAR



HIGH BOOTS 4321

EN ISO 20347:2022

42 size
Height: 220 ± 5mm | 42 size
Half-pair weight: 810g ± 3% | **Sizes:** 35 - 52



COYOTE

OLIVE

BLACK

- Upper material:
 - waterproof nubuck 2.0-2.2 mm;
 - 100% nylon 6.6 Cordura – durable material with water-repellent properties;
 - Additional protective TPU padding on the toe;
 - Lining: light and breathable material Mesh.
 - Membrane ePTFE: waterproof material which provides protection against water penetration in dynamic conditions for more than 48 hours. Also has vapor-permeable and abrasion resistant properties.
 - All upper parts are stitched with waterproof threads.
 - Lacing:
 - durable and waterproof laces;
 - anti-corrosion loops;
 - strong polyamide textile loop at the back;
 - Outsole: PU-Rubber self-cleaning, high temperatures and average low temperature/oil resistant, provides stability on difficult turns and directions (SR) (HRO).
 - Main insole: made of kevlar material which has anti-puncture properties.
 - Removable insole: three-layer comfortable anatomically shaped insole which absorbs moisture and remains dry in difficult conditions, antibacterial properties.
- Boots made as per Gore-Tex technology.



BROWN

THIS MODEL IS USED BY THE ARMED FORCES OF UKRAINE

AND OTHER UKRAINIAN DEFENSE FORCES IN THE RUSSIAN-UKRAINIAN WAR



HIGH BOOTS 4327

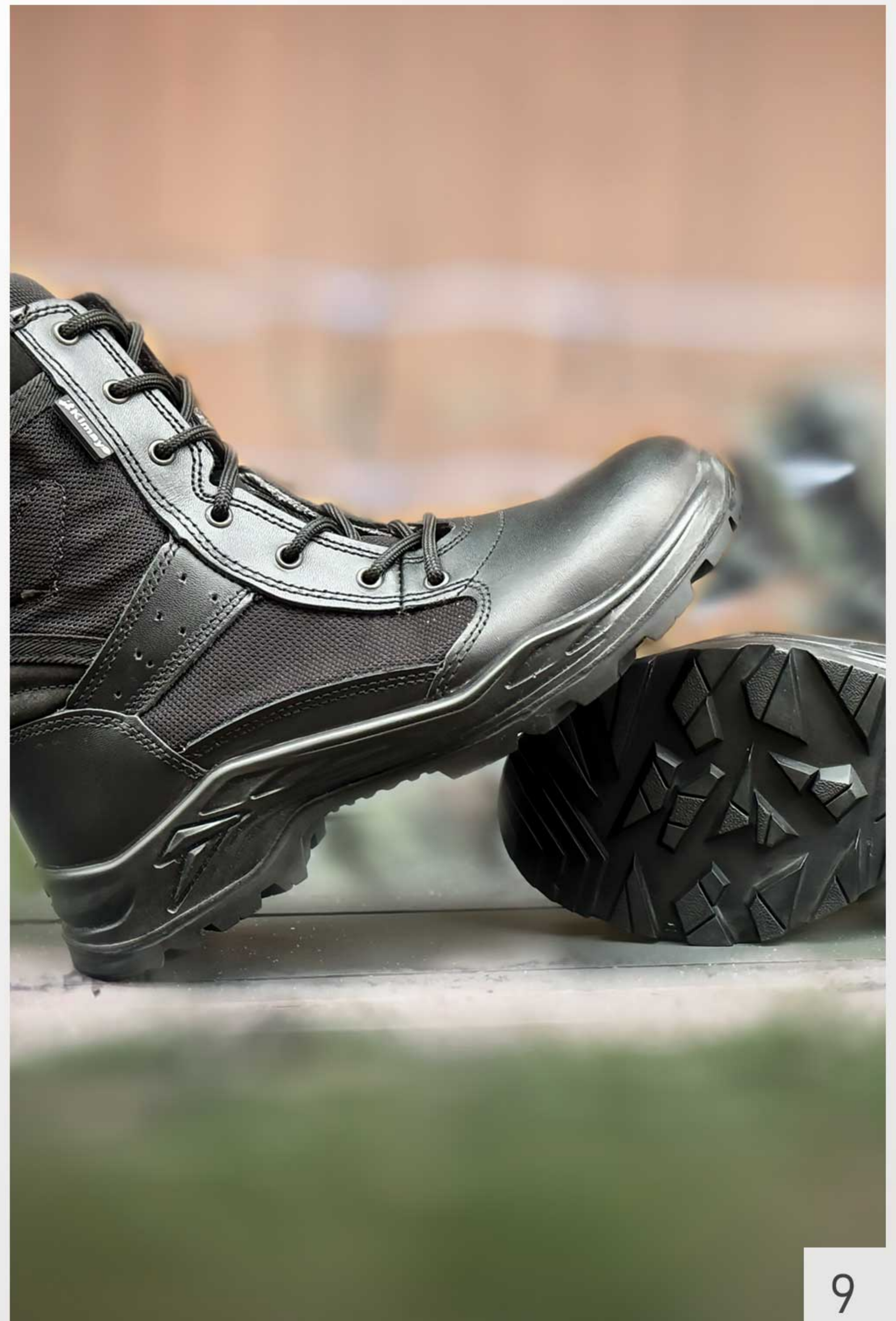
EN ISO 20347:2022

42 size
Height: 180 ± 5mm | 42 size
Half-pair weight: 690g ± 3% | **Sizes:** 35 - 52

- Upper material:
 - smooth waterproof chrome leather 2.0-2.2 mm;
 - 100% nylon 6.6 Cordura – durable material with water-repellent properties;
- Lining: light and breathable material Mesh.
- All upper parts are stitched with tough threads.
- Lacing:
 - durable laces;
 - anti-corrosion eyelets;
- Outsole: PU-Rubber self-cleaning, high and average low temperature temperatures/oil resistant, provides stability on difficult turns and directions (SR)(HRO).
- Main insole: made of strobel material;
- Removable insole: three-layer comfortable anatomically shaped insole which absorbs moisture and remains dry in difficult conditions, antibacterial properties.



BLACK



LOW SHOES 4457

EN ISO 20347:2022

42 size
Height: 80 ± 5mm | 42 size
Half-pair weight: 425g ± 3% | **Sizes:** 35 - 52



DESERT

BROWN

BLACK

- Upper material:
 - nubuck 1.0-1.5 mm, water resistance;
 - protective TPU cover for toe/back;
 - 100% nylon 6.6 Cordura – durable material with water-repellent properties;
 - On the tongue placed a pocket for storing the free ends of the laces.
 - Lining: light and breathable material Mesh.
 - Membrane ePTFE: waterproof material which provides protection against water penetration in dynamic conditions for more than 48 hours. Also has vapor-permeable and abrasion resistant properties.
 - All upper parts are stitched with waterproof threads.
 - Lacing:
 - durable and waterproof laces;
 - anti-corrosion eyelets;
 - strong polyamide textile loops;
 - Outsole: PU-Rubber self-cleaning, high temperatures/oil resistant, provides stability on difficult turns and directions (SR)(HRO).
 - Main insole: made of strobil material.
 - Removable insole: three-layer comfortable anatomically shaped insole which absorbs moisture and remains dry in difficult conditions, model memory properties.
- Boots made as per Gore-Tex technology.



OLIVE

LOW SHOES 4356

EN ISO 20347:2015

42 size
Height: 80 ± 5mm | 42 size
Half-pair weight: 465g ± 3% | **Sizes:** 36 - 48



GREEN

BROWN

BLACK

- Upper material:
 - breathable suede leather;
 - polyurethane net that provides extra protection;
 - protective TPU cover for toe/back;
 - 100% nylon 6.6 Cordura – durable material with water-repellent properties;
 - Lining: light and breathable material Mesh.
 - Membrane ePTFE: waterproof material which provides protection against water penetration in dynamic conditions for more than 48 hours. Also has vapor-permeable and abrasion resistant properties.
 - All upper parts are stitched with waterproof threads.
 - Lacing:
 - durable and waterproof laces;
 - anti-corrosion eyelets;
 - strong polyamide textile loops;
 - Outsole: PU-Rubber (Vibram) self-cleaning, high temperatures/oil resistant, provides stability on difficult turns and directions (SR)(HRO).
 - Main insole: made of strobil material.
 - Removable insole: three-layer comfortable anatomically shaped insole which absorbs moisture and remains dry in difficult conditions, antibacterial properties.
- Boots made as per Gore-Tex technology.



DESERT

LOW SHOES 7436

EN ISO 20347:2022

42 size Height: 75 ± 5mm | 42 size Half-pair weight: 480g ± 3% | Sizes: 36 - 48



COYOTE

BROWN

BLACK

- Upper material:
 - made by comfortable textile material in combination in nubuk;
 - protective leather cover for toe/back;
 - Lining: light and breathable material Mesh.
 - Membrane ePTFE: waterproof material which provides protection against water penetration in dynamic conditions for more than 48 hours. Also has vapor-permeable and abrasion resistant properties.
 - All upper parts are stitched with waterproof threads.
 - Lacing:
 - durable and waterproof laces;
 - anti-corrosion eyelets;
 - strong polyamide textile loops;
 - Outsole: PU-Rubber (Vibram) self-cleaning, high temperatures/oil resistant, provides stability on difficult turns and directions (SR)(HRO).
 - Main insole: made of strobil material.
 - Removable insole: three-layer comfortable anatomically shaped insole which absorbs moisture and remains dry in difficult conditions, antibacterial properties.
- Boots made as per Gore-Tex technology.



OLIVE



MID SHOES 7404

EN ISO 20347:2022

42 size Height: 140 ± 5mm | 42 size Half-pair weight: 540g ± 3% | Sizes: 36 - 48



COYOTE

BROWN

BLACK

- Upper material:
 - made by comfortable textile material in combination in nubuk;
 - protective leather cover for toe/back;
 - Lining: light and breathable material Mesh.
 - Membrane ePTFE: waterproof material which provides protection against water penetration in dynamic conditions for more than 48 hours. Also has vapor-permeable and abrasion resistant properties.
 - All upper parts are stitched with waterproof threads.
 - Lacing:
 - durable and waterproof laces;
 - anti-corrosion loops;
 - strong polyamide textile loops;
 - Outsole: PU-Rubber (Vibram) self-cleaning, high temperatures/oil resistant, provides stability on difficult turns and directions (SR)(HRO).
 - Main insole: made of strobil material.
 - Removable insole: three-layer comfortable anatomically shaped insole which absorbs moisture and remains dry in difficult conditions, antibacterial properties.
- Boots made as per Gore-Tex technology.



OLIVE



MID BOOTS 4338

EN ISO 20347:2022

42 size Height: 150 ± 5mm | 42 size Half-pair weight: 780g ± 3% | Sizes: 35 - 52



COYOTE

OLIVE

BROWN

- Upper material:
 - smooth waterproof chrome leather 2.0-2.2 mm;
 - 100% nylon 6.6 Cordura – durable material with water-repellent properties
 - protective TPU cover for toe.
 - Lining: light and breathable material Mesh.
 - Membrane ePTFE: waterproof material which provides protection against water penetration in dynamic conditions for more than 48 hours. Also has vapor-permeable and abrasion resistant properties.
 - All upper parts are stitched with waterproof threads.
 - Lacing:
 - durable and waterproof laces;
 - anti-corrosion loops;
 - strong polyamide textile loop at the middle and back;
 - Outsole: PU-Rubber self-cleaning, high and average low temperature temperatures/oil resistant, provides stability on difficult turns and directions (SR)(HRO).
 - Main insole: made of strobil material.
 - Removable insole: three-layer comfortable anatomically shaped insole which absorbs moisture and remains dry in difficult conditions, antibacterial properties.
- Boots made as per Gore-Tex technology.



BLACK



MID BOOTS 7306

EN ISO 20347:2022

42 size Height: 130 ± 5mm | 42 size Half-pair weight: 560g ± 3% | Sizes: 36 - 48



COYOTE

OLIVE

BLACK

- Upper material:
 - waterproof nubuck 2.0-2.2 mm;
 - protective TPU cover for along the entire length of the ankle with extra protect in back;
 - 100% nylon 6.6 Cordura – durable material with water-repellent properties;
 - Lining: light and breathable material Mesh.
 - Membrane ePTFE: waterproof material which provides protection against water penetration in dynamic conditions for more than 48 hours. Also has vapor-permeable and abrasion resistant properties.
 - All upper parts are stitched with waterproof threads.
 - Fit: quick lacing system.
 - Outsole: PU-Rubber (Vibram) self-cleaning, high and low temperatures/oil resistant (SR)(HRO).
 - Main insole: made of strobil material.
 - Removable insole: three-layer comfortable anatomically shaped insole which absorbs moisture and remains dry.
- Boots made as per Gore-Tex technology.



BROWN



MID BOOTS 7408

EN ISO 20347:2022

42 size Height: 140 ± 5mm | 42 size Half-pair weight: 560g ± 3% | Sizes: 36 - 48



COYOTE

OLIVE

BROWN

- Upper material:
 - waterproof nubuck 2.0-2.2 mm;
 - 100% nylon 6.6 Cordura - durable material with water-repellent properties;
 - protective TPU cover for toe/back.
 - On the tongue placed a pocket for storing the free ends of the laces.
 - Lining: light and breathable material Mesh.
 - Membrane ePTFE: waterproof material which provides protection against water penetration in dynamic conditions for more than 48 hours. Also has vapor-permeable and abrasion resistant properties.
 - All upper parts are stitched with waterproof threads.
 - Lacing:
 - durable and waterproof laces;
 - anti-corrosion hooks for better fixing;
 - strong polyamide textile loops;
 - Outsole: PU-Rubber (Vibram) self-cleaning, high temperatures/oil resistant, provides stability on difficult turns and directions (SR)(HRO).
 - Main insole: made of strobil material.
 - Removable insole: three-layer comfortable anatomically shaped insole which absorbs moisture and remains dry in difficult conditions, antibacterial properties.
- Boots made as per Gore-Tex technology.



BLACK

MID BOOTS 4354

EN ISO 20347:2022

42 size Height: 135 ± 5mm | 42 size Half-pair weight: 560g ± 3% | Sizes: 36 - 48



COYOTE

OLIVE

BROWN

- Upper material:
 - waterproof nubuck 2.0-2.2 mm;
 - 100% nylon 6.6 Cordura - durable material with water-repellent properties;
 - protective TPU cover for toe/back
 - Lining: light and breathable material Mesh.
 - Membrane ePTFE: waterproof material which provides protection against water penetration in dynamic conditions for more than 48 hours. Also has vapor-permeable and abrasion resistant properties.
 - All upper parts are stitched with waterproof threads.
 - Lacing:
 - durable and waterproof laces;
 - anti-corrosion loops;
 - strong polyamide textile loops;
 - Outsole: PU-Rubber (Vibram) self-cleaning, high temperatures/oil resistant, provides stability on difficult turns and directions (SR)(HRO).
 - Main insole: made of strobil material.
 - Removable insole: three-layer comfortable anatomically shaped insole which absorbs moisture and remains dry in difficult conditions, antibacterial properties.
- Boots made as per Gore-Tex technology.



BLACK

FIREFIGHTER BOOTS 7405

EN ISO 20345:2022

^{42 size} Height: 225 ± 5mm | ^{42 size} Half-pair weight: 1050g ± 3% | Sizes: 36 - 48

Protection class: S3

- Upper material:
 - durable chrome leather, fire/water resistant;
 - protective rubber cover for toe/back;
 - protective fire-impact resistance cover;
 - composite safety toe cup, impact load 200 joules;
 - reflective inserts;
 - Lining: light and breathable material Mesh.
 - Membrane ePTFE: waterproof material which provides protection against water penetration in dynamic conditions for more than 48 hours. Also has vapor-permeable and abrasion resistant properties.
 - All upper parts are stitched with waterproof/fire resistance threads.
 - Lacing:
 - durable waterproof/fire resistant laces;
 - quick lacing system;
 - Main insole: made of kevlar material which has anti-puncture properties, puncture resistance of more than 1100 Newton.
 - Outsole: PU-Rubber (MICHELINE) self-cleaning, high temperatures/oil resistant, provides stability on difficult turns and directions (SR)(HRO), do not melt upon contact with high surfaces.
- Boots made as per Gore-Tex technology.



BLACK

FIREFIGHTER BOOTS 7342

EN ISO 20345:2022

^{42 size} Height: 260 ± 5mm | ^{42 size} Half-pair weight: 1080g ± 3% | Sizes: 36 - 48

Protection class: S3

- Upper material:
 - durable smooth chrome leather, fire/water resistant;
 - protective rubber cover for toe/back;
 - composite safety toe cup, impact load 200 joules;
 - reflective inserts;
 - leather loops for comfortable and quick putting on
 - Lining: light and breathable material Mesh.
 - Membrane ePTFE: waterproof material which provides protection against water penetration in dynamic conditions for more than 48 hours. Also has vapor-permeable and abrasion resistant properties.
 - All upper parts are stitched with waterproof/fire resistance threads.
 - Main insole: made of kevlar material which has anti-puncture properties, puncture resistance of more than 1100 Newton.
 - Outsole: PU-Rubber (MICHELINE) self-cleaning, high temperatures/oil resistant, provides stability on difficult turns and directions (SR)(HRO), not melt when in contact with high surface temperatures and is fireproof.
- Boots made as per Gore-Tex technology.



BLACK

MID BOOTS 4300

EN ISO 20347:2022

42 size Height: 155 ± 5mm | 42 size Half-pair weight: 768g ± 3% | Sizes: 36 - 48



COYOTE

OLIVE

BLACK

- Upper material:
 - waterproof nubuck 2.0-2.2 mm;
 - 100% nylon 6.6 Cordura - durable material with water-repellent properties;
 - Lining: light and breathable material Mesh.
 - Membrane ePTFE: waterproof material which provides protection against water penetration in dynamic conditions for more than 48 hours. Also has vapor-permeable and abrasion resistant properties.
 - All upper parts are stitched with waterproof threads.
 - Lacing:
 - durable and waterproof laces;
 - anti-corrosion loops and hooks;
 - strong polyamide textile loop at the middle and back;
 - Outsole: PU-Rubber self-cleaning, high and average low temperature temperatures/oil resistant, provides stability on difficult turns and directions (SR)(HRO).
 - Main insole: made of strobil material.
 - Removable insole: three-layer comfortable anatomically shaped insole which absorbs moisture and remains dry in difficult conditions, antibacterial properties.
- Boots made as per Gore-Tex technology.



BROWN

MID BOOTS 4300 VIBRAM

EN ISO 20347:2022

42 size Height: 155 ± 5mm | 42 size Half-pair weight: 610g ± 3% | Sizes: 36 - 48



COYOTE

OLIVE

BLACK

- Upper material:
 - waterproof nubuck 2.0-2.2 mm;
 - 100% nylon 6.6 Cordura - durable material with water-repellent properties;
 - Lining: light and breathable material Mesh.
 - Membrane ePTFE: waterproof material which provides protection against water penetration in dynamic conditions for more than 48 hours. Also has vapor-permeable and abrasion resistant properties.
 - All upper parts are stitched with waterproof threads.
 - Lacing:
 - durable and waterproof laces;
 - anti-corrosion loops and hooks;
 - strong polyamide textile loop at the middle and back;
 - Outsole: PU-Rubber (Vibram) self-cleaning, high temperatures/oil resistant, provides stability on difficult turns and directions (SR)(HRO).
 - Main insole: made of strobil material.
 - Removable insole: three-layer comfortable anatomically shaped insole which absorbs moisture and remains dry in difficult conditions, antibacterial properties.
- Boots made as per Gore-Tex technology.



BROWN

MID BOOTS 4333

EN ISO 20347:2022

42 size Height: 135 ± 5mm | 42 size Half-pair weight: 735g ± 3% | Sizes: 35 - 52



COYOTE

OLIVE

BROWN

- Upper material:
 - smooth waterproof chrome leather 2.0-2.2 mm;
 - 100% nylon 6.6 Cordura – durable material with water-repellent properties;
 - Lining: light and breathable material Mesh.
 - Membrane ePTFE: waterproof material which provides protection against water penetration in dynamic conditions for more than 48 hours. Also has vapor-permeable and abrasion resistant properties.
 - All upper parts are stitched with waterproof threads.
 - Lacing:
 - durable and waterproof laces;
 - anti-corrosion loops and eyelets;
 - strong polyamide textile loop at the middle and back;
 - Outsole: PU-Rubber self-cleaning, high and average low temperature temperatures/oil resistant, provides stability on difficult turns and directions (SR)(HRO).
 - Main insole: made of strobil material.
 - Removable insole: three-layer comfortable anatomically shaped insole which absorbs moisture and remains dry in difficult conditions, antibacterial properties.
- Boots made as per Gore-Tex technology.



BLACK

MID BOOTS 4329

EN ISO 20347:2022

42 size Height: 180 ± 5mm | 42 size Half-pair weight: 700g ± 3% | Sizes: 35 - 52



COYOTE

OLIVE

BROWN

- Upper material:
 - smooth waterproof chrome leather 2.0-2.2 mm;
 - 100% nylon 6.6 Cordura – durable material with water-repellent properties;
- Lining: light and breathable material Mesh.
- All upper parts are stitched with waterproof threads.
- Lacing:
 - durable and waterproof laces
 - anti-corrosion metal hooks and blocks
 - anti-corrosion shoe zipper for quick put on/off.
- Outsole: PU-Rubber self-cleaning, high and average low temperature temperatures/oil resistant, provides stability on difficult turns and directions (SR)(HRO).
- Main insole: made of strobil material.
- Removable insole: three-layer comfortable anatomically shaped insole which absorbs moisture and remains dry in difficult conditions, antibacterial properties.



BLACK

PVC BOOTS ProTechFit

EN ISO 20345:2022 +A1:2024 S5 SR

42 size Height: 335 ± 5mm | 42 size Half-pair weight: 1000g ± 3% | Sizes: 39 - 48



Graphite

White

Yellow

- Upper material: PVC with 8% nitrile rubber — resistant to mechanical damage and aggressive substances.
- Lining: Polyester — strong, durable, and comfortable.
- Safety toe cap: Steel (200 J) or without a steel toe cap.
- Main insole: Stainless steel or without a main insole .
- Removable insole: Anatomical shape for optimal fit and stability.
- Outsole: PVC with 8% nitrile rubber — anti-slip, durable, and resistant to oils and fuels.
- Protection class: S5 SR / 04 SR

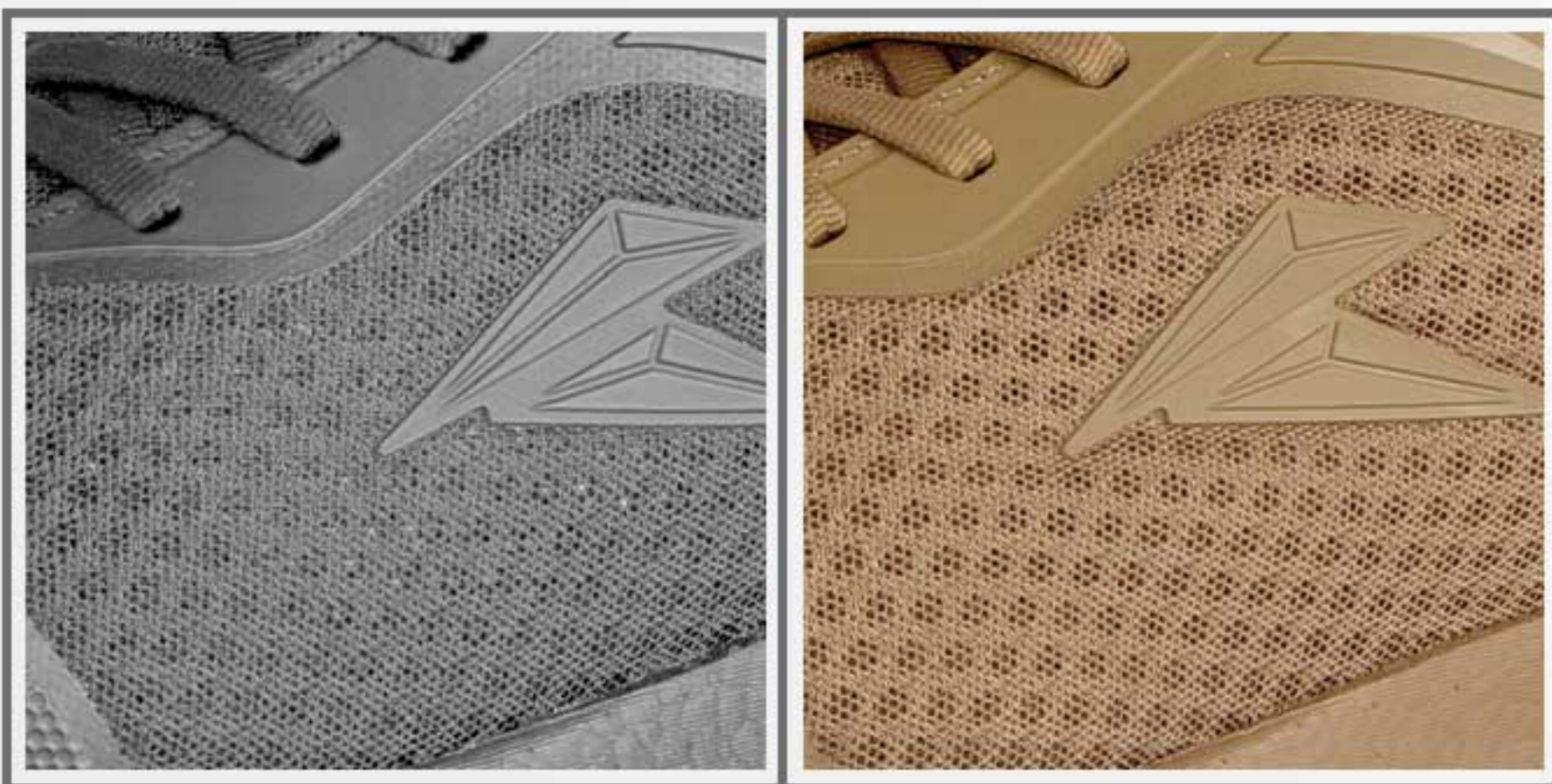


Olive

LOW SHOES UrbanTactic

EN ISO 20347:2022

42 size Height: 105 ± 5mm | 42 size Half-pair weight: 320g ± 3% | Sizes: 36 - 48



BLACK

COYOTE

- Upper material:
 - Breathable structural mesh that ensures an unobstructed flow of air.
 - Reinforced polymer protective layer on the toe and heel to prevent mechanical damage and maintain shape.
- Lining: Thermoregulating materials designed to maintain an optimal microclimate inside the shoe during hot weather.
- Lacing: durable laces.
- Slide-in system: special heel counter shape for effortless putting on while maintaining a stable fit.
- Designed for continuous wear for 12+ hours with even pressure distribution.
- Removable insole: Anatomical shape for optimal fit and stability.
- Outsole:
 - Two-component "EVA + Rubber" construction.
 - EVA cushioning layer: effectively absorbs shock loads on joints and the spine.
 - Rubber protector: slip-resistant and highly durable on hot asphalt.
- Energy-efficient design that returns energy with every step to reduce leg fatigue.



Olive

ABOUT US

Today, TALAN Group is a powerful association of leading light industry enterprises with a production capacity of 2.3 million pairs of footwear per year and over 10,000 employees. A research and production center for the development, research, and manufacture of personal protective equipment has been established within the TALAN association.



OUR PRODUCTION

The total production of military footwear was about one million pairs, which is double the level of previous years. The annual total output of footwear was 1.3 million pairs. The average number of employees is 2.3 thousand people. The total amount of taxes paid by the group's companies in 2022 amounted to UAH 486.1 million.

Today, we can confidently say that, over its century-long history, Talan has achieved undisputed leadership in the production of high-quality footwear for occupational safety and health.







Perfect fit



Chemical resistance



Impact resistance



Penetration resistance



Water resistance







INFO@TALANSHOP.DE

INFO@TALANBHP.PL